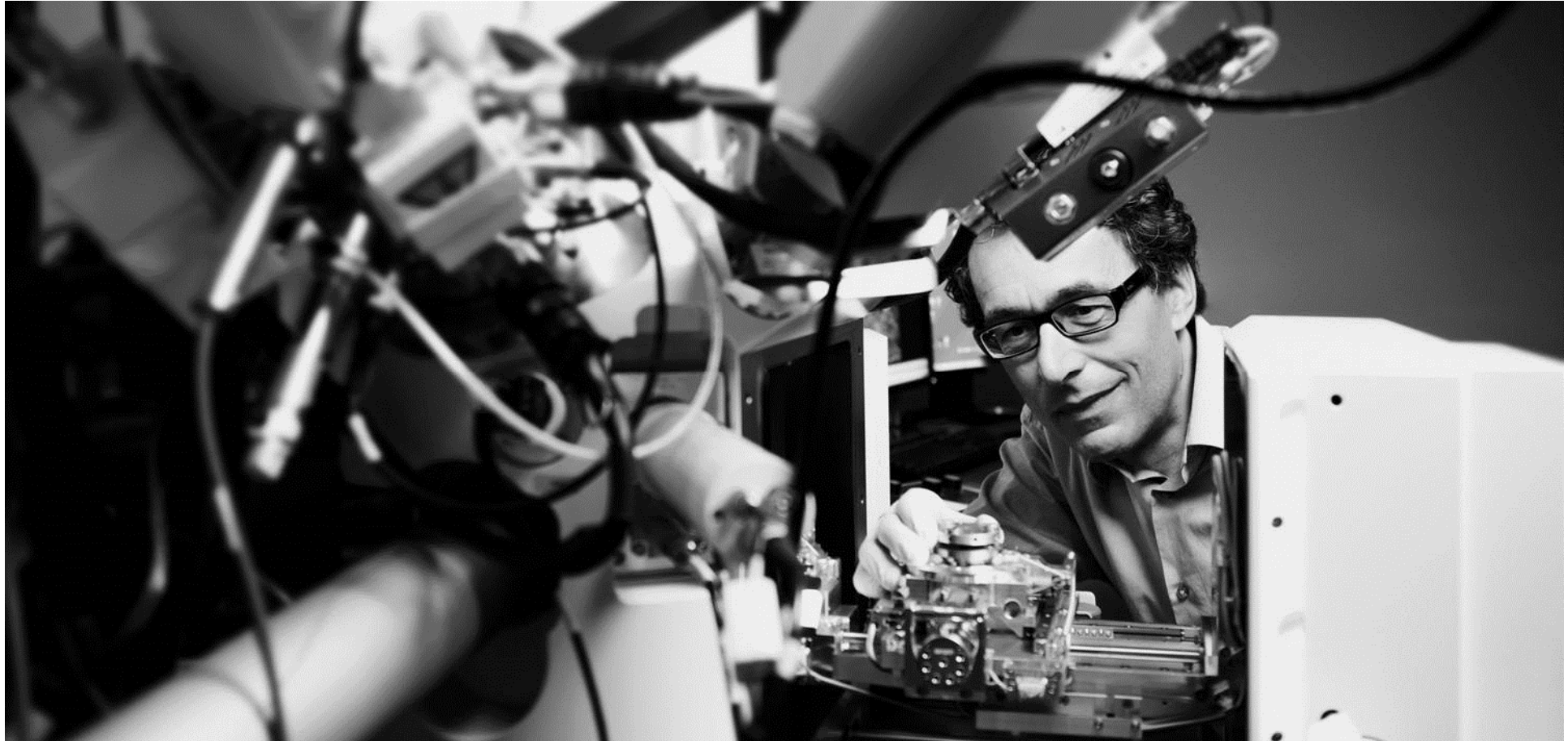


Smartzoom Applications V 1.4



Jochen Schweizer
Global Sales Support Industry
16.07.2015

Please note ...



This presentation is for internal use only. Do not distribute it.

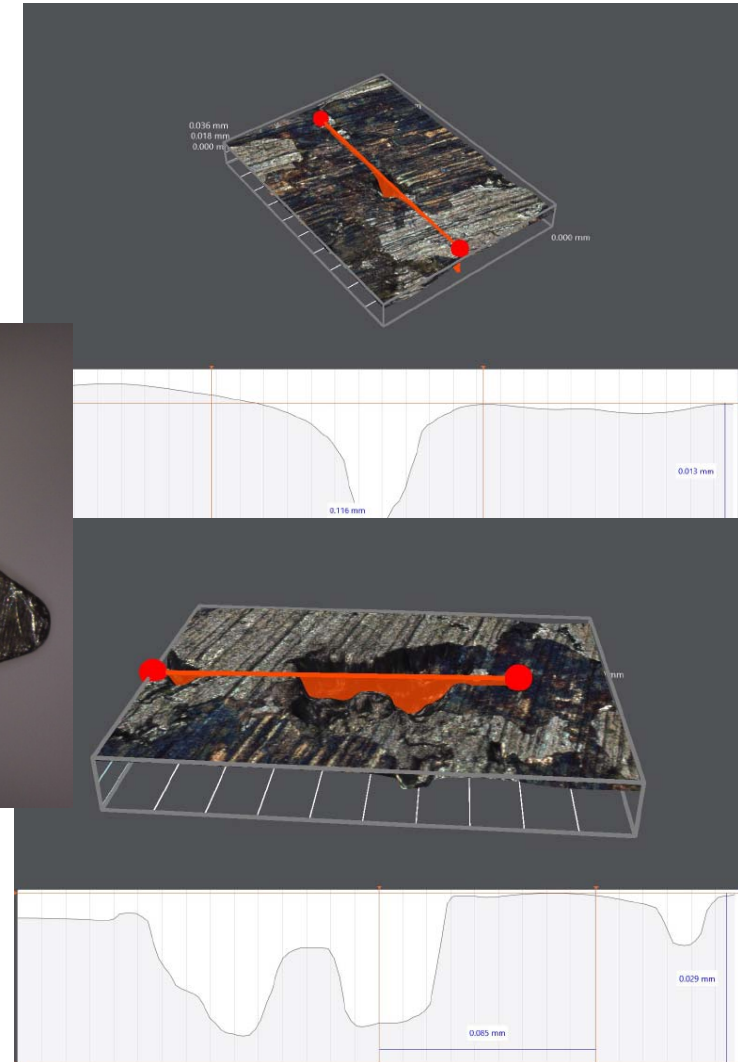
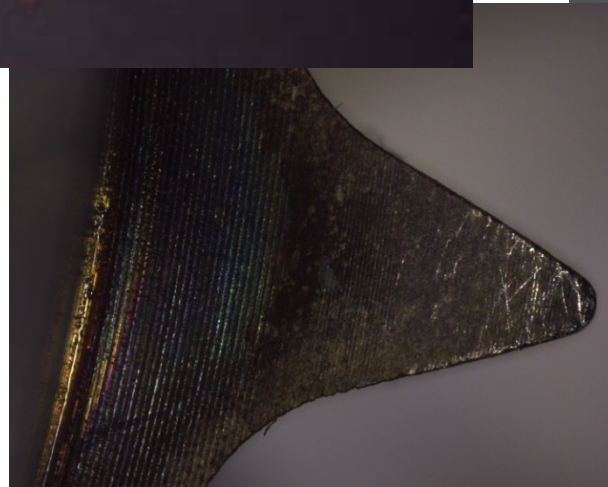
Images / Customers **confidential**.

Metal Working

Failure Analysis Corrosion Inspection

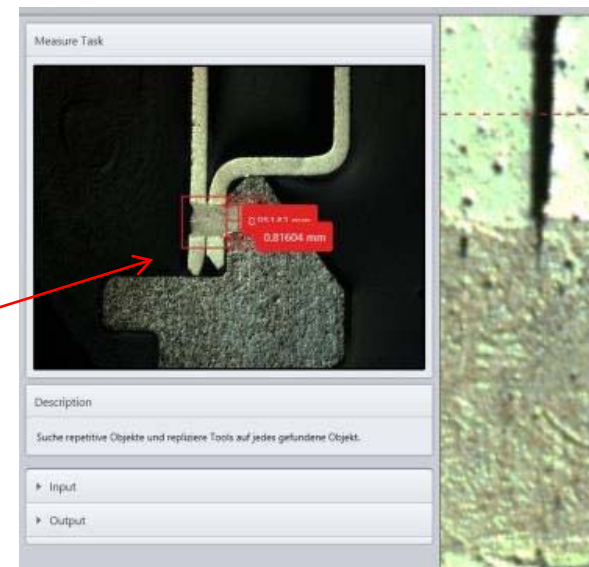
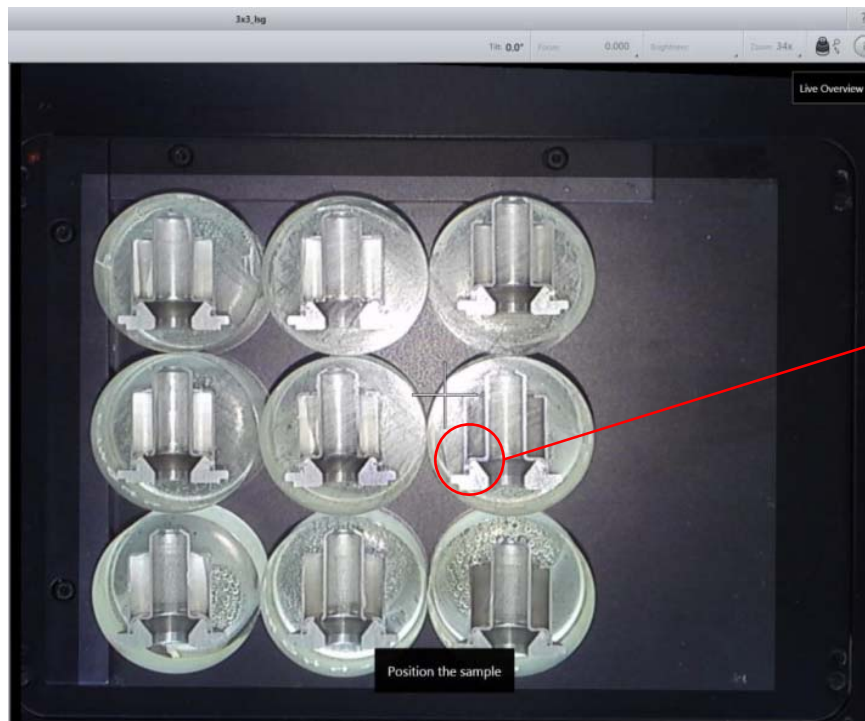


- Inspection of corrosion defects on gear-wheels
- Lateral and depth measurement of corrosion impact
- Documentation of images, defect structure, color
- Documentation of measurement results



Welding

FH Aalen. Serial measurements of welding seams

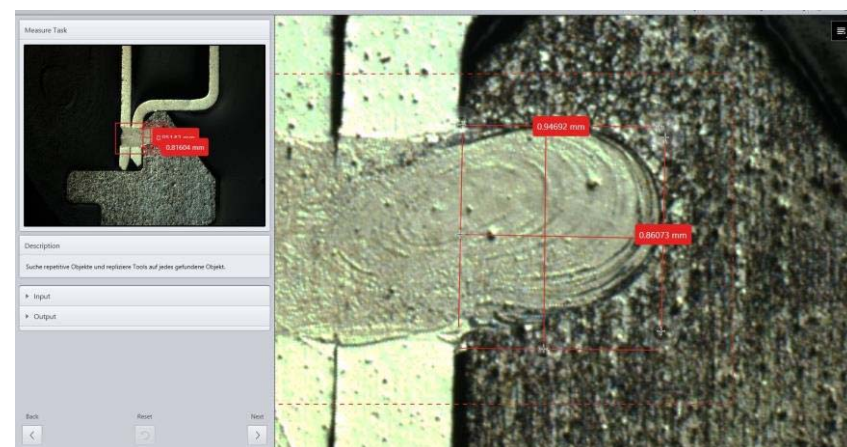


1. Setting up a routine job by measuring the first weld cut set manually
2. Using the “repetitive object” function
3. Documentation of results

Key advantage:

Smartzoom is analyzing all 9 samples (total of 18 welding seams) within 10 minutes.

(In comparison a conventional system needs ~ 2 hours.)



Metallic work piece

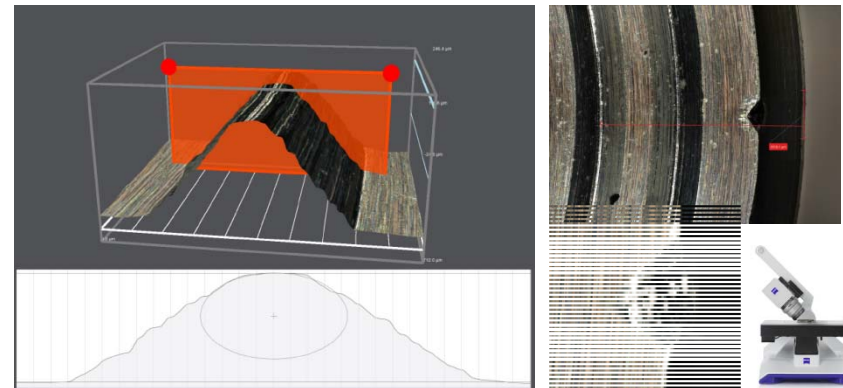
Optical characterization



- 1 Identification and characterization of defects on metallic work pieces



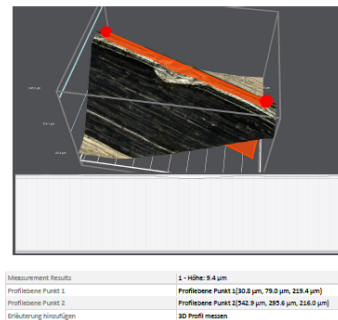
- 2 Visualize and measure defects by using different views in 2D and 3D



- 3 Tracable results, automated report



Smartzoom 5 full report



Page 15 of 19

Smartzoom 5 Features



- Overview image for navigation on work piece and rough identification of relevant areas
- Free mode to perform optical inspection (Best Image, Tilting, Illumination combinations,...)

Injection Molding

Burr evaluation at glued moulding parts



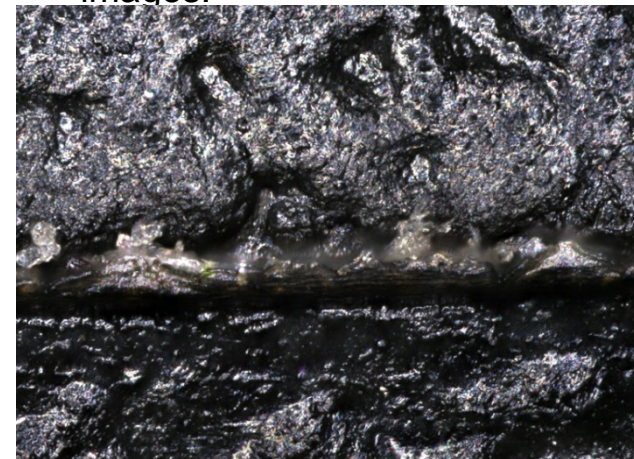
1

Before: Manual evaluation of burr by haptic impression with thumb. Evaluation differs from operator to operator.



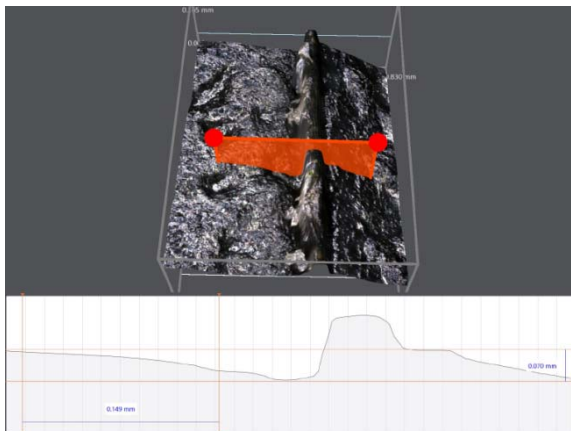
2

Define the inspection plan: set coordinate system, stage position, focus, acquire 3D images.



3

Measure burr at pre-defined spots



Smartzoom 5 Features



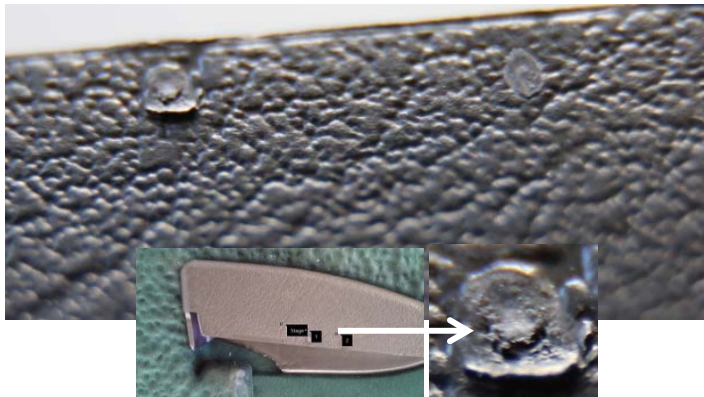
- Automated positioning
- Automated focusing
- **User independent, reliable results**

Injection Molding

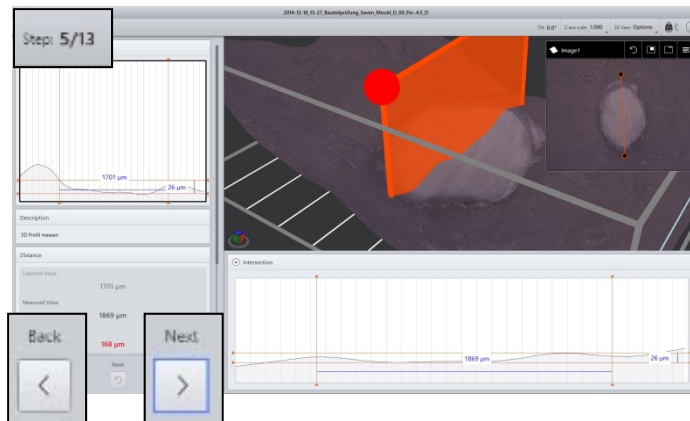
Quality Control of pre-production



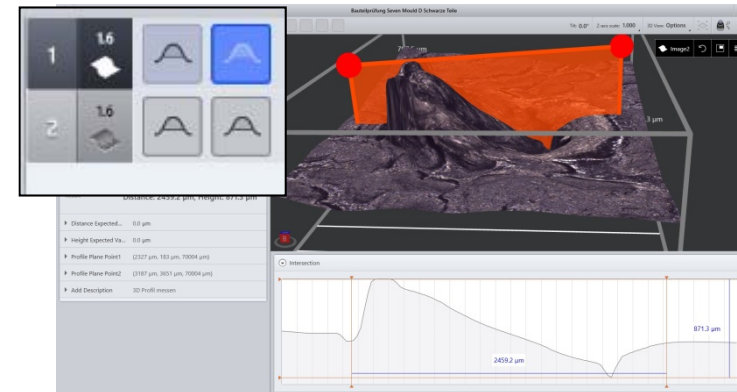
- 1 Box of work pieces:
Injection spots to be qualified



- 3 Run the semi-automated inspection wizard for **all** work pieces



- 2 Define the inspection plan: set coordinate system, stage position, focus, acquire images, apply tools.



Smartzoom 5 Features



- Automated positioning
- Automated focusing
- **10x faster** than inspection with a standard microscope

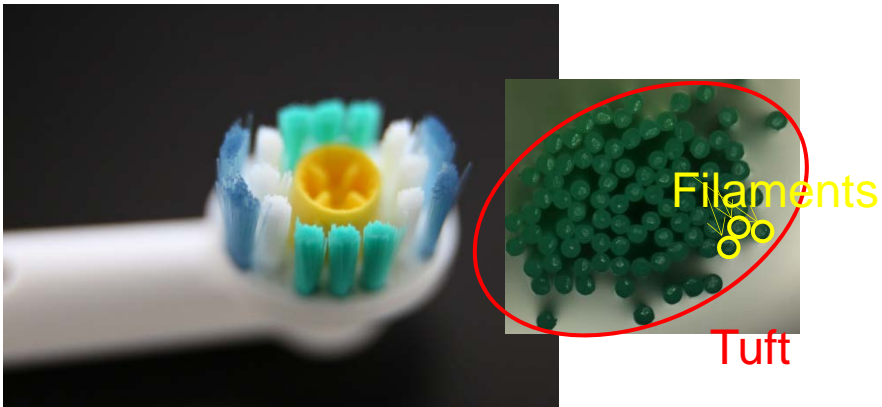
Manufacturing

Imaging and counting of tufts filaments



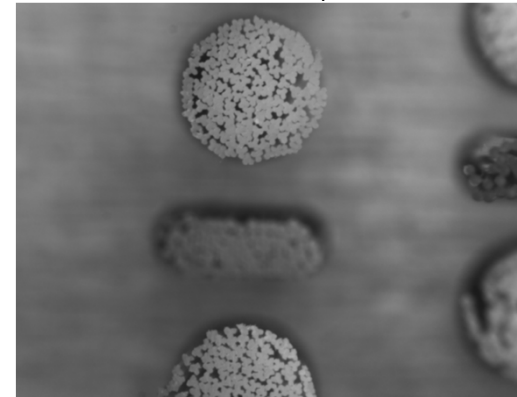
1

Quality Control: assure the correct number of filaments in each tuft



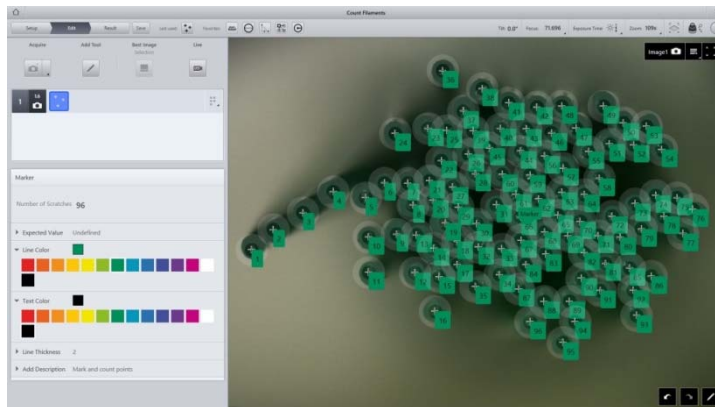
2

Define the inspection plan for toothbrush head: set coordinate system, teach individual tufts, count filaments



3

All results images of the whole toothbrush will be automatically archived



Smartzoom 5 Features



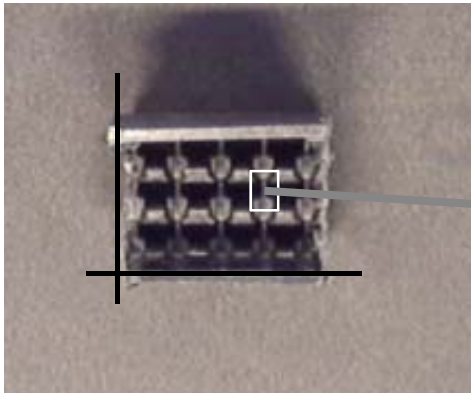
- **Inspection plan** contains all inspection tasks for whole toothbrush head
- Tufts are **positioned and focused automatically**

Injection Molding

Random Inspection of Inner Bars Of Patch Plug

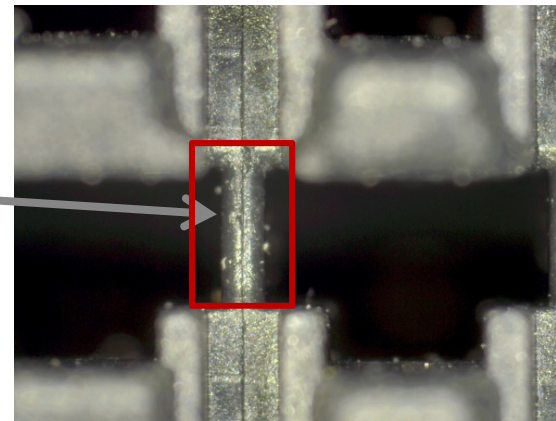


- 1 Inner bars should be measured

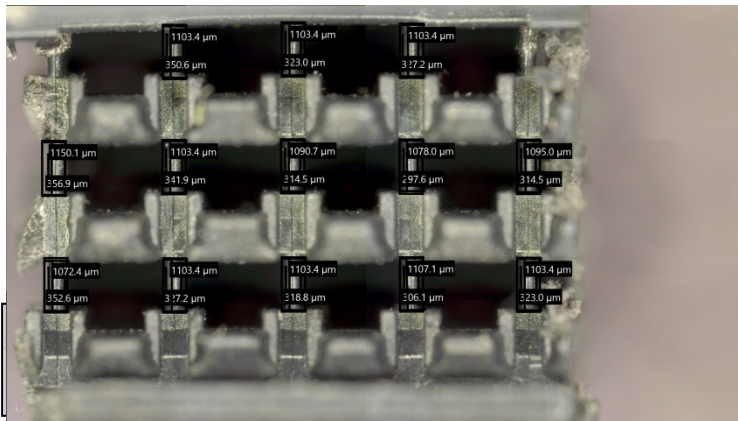


- 2

Define the inspection plan: set coordinate system, stage position, focus, acquire images, apply tools.



- 3 Run the semi-automated inspection wizard for **all** bars on **all** work pieces



Smartzoom 5 Features

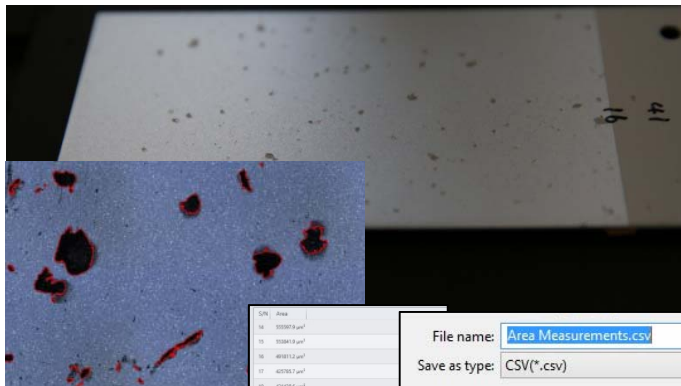


- Overview camera enables fast navigation
- Automated replication of tools on large stitched images on each nest

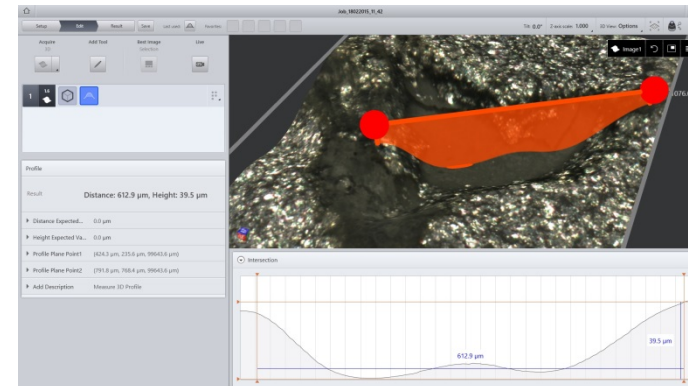
Automotive Failure Analysis Car finish Hardness testing



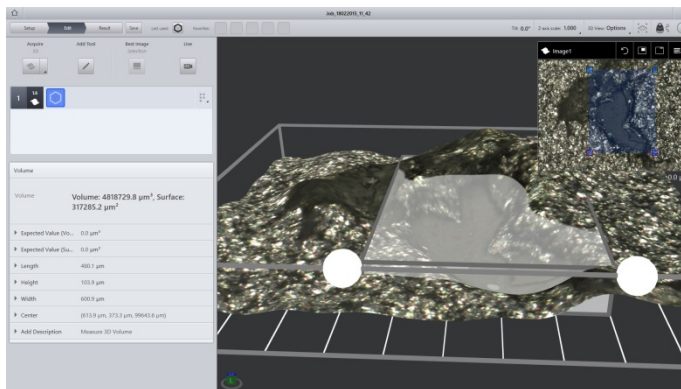
- 1 Automatic measurement of wholes in car finish and export of results to excel



- 2 Determine width and height of critical wholes



- 3 Determine volume of critical wholes



Smartzoom 5 Features



- Easy navigation through overview image
- Optimal settings proposed by Best Image
- Automatic measurement with are measurements

Metal working

Dental implant cut



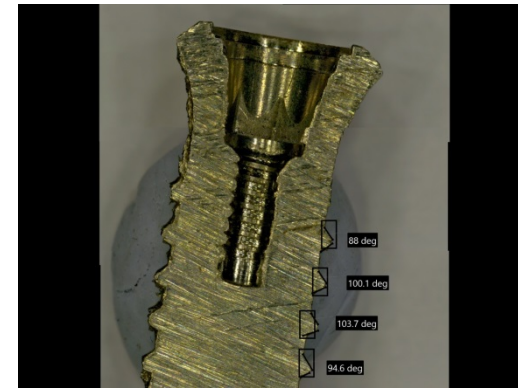
1

Random inspection of dental cuts. 2D measurements at predefined positions



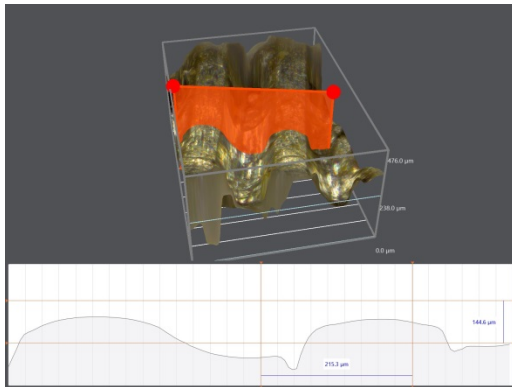
2

Replicate tools on repetitive spots:
Measure angles on all outer threads.



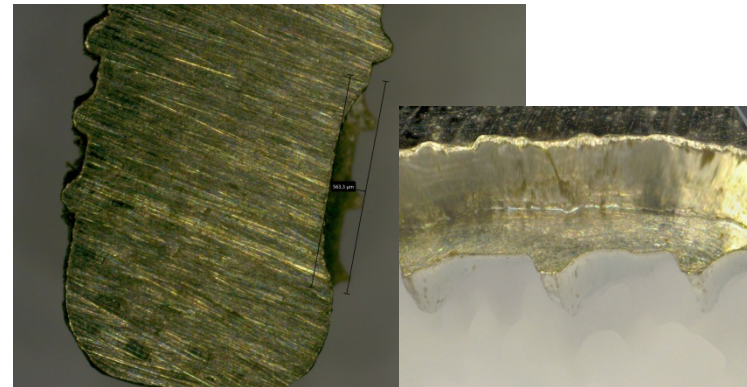
3

Measure 3D profiles in inner thread



4

Detect and analyze defects in material
in 2D and 3D



Coin House

Flexible microscope for multiple optical inspections.



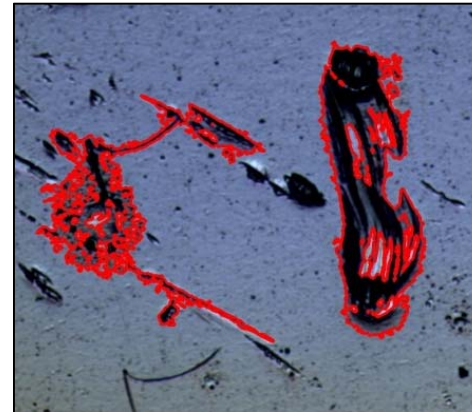
1

Random inspection of polished surface of commemorative coins



2

Automatic area measurement of scratches



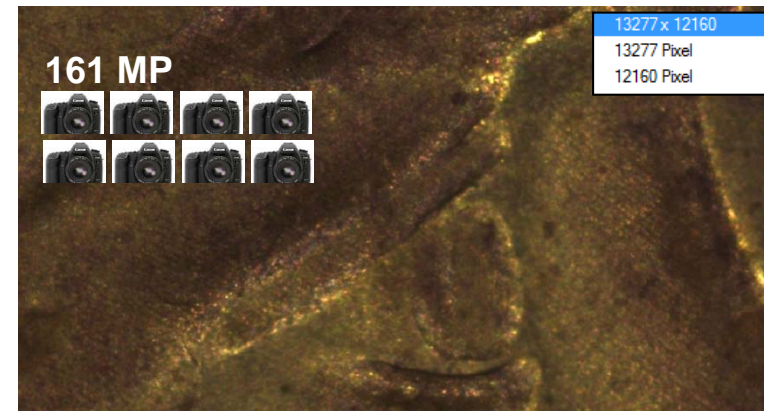
3

Routine inspection of 4x ducat



4

Archive high resolution image of complete ducat for documentation



Coin House

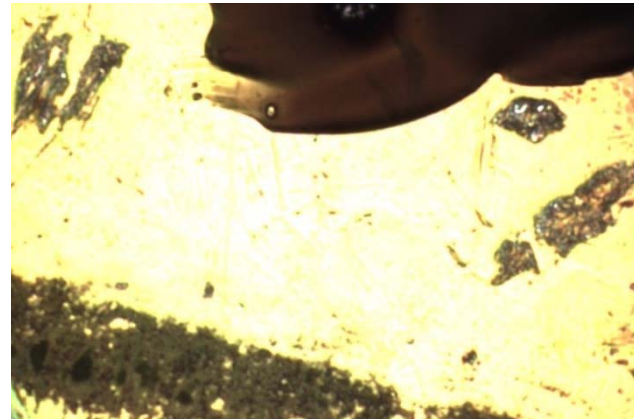
Random quality check of round blanks



1 Random inspection of round blank



2 Automatic measurement of dark areas



3 Random inspection of round blank



4 Identification of contamination

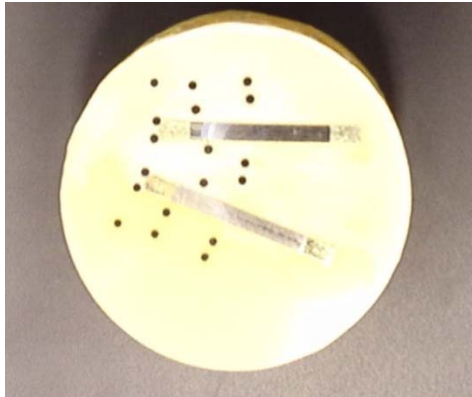


Coin House

Flexible microscope for multiple optical inspections.



1 Random inspection cross-section polish



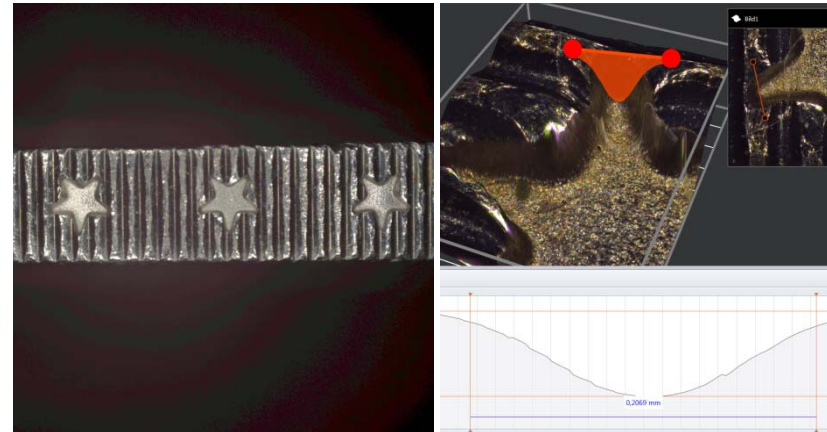
2 Measurement of joining area



3 Random inspection of lateral surface



4 Analyse profile of star



Metal Working

Lock barrel.



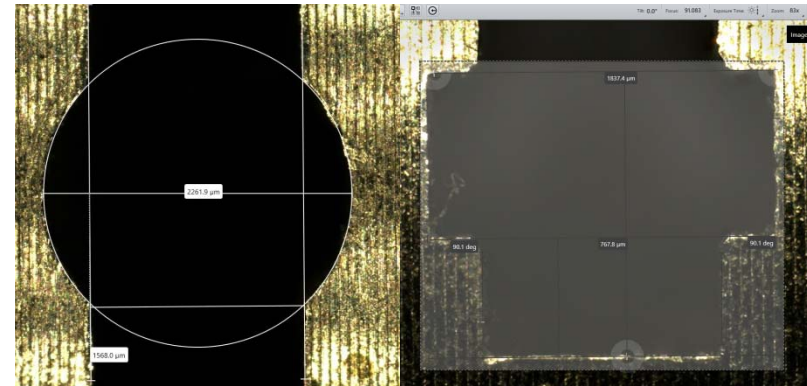
1

Define inspection plan for lock barrel.



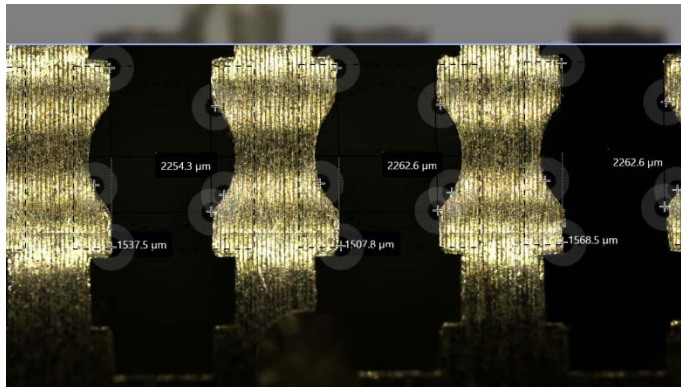
2

Teach templates and define inspection plan



3

Run inspection plan



Smartzoom 5 Features



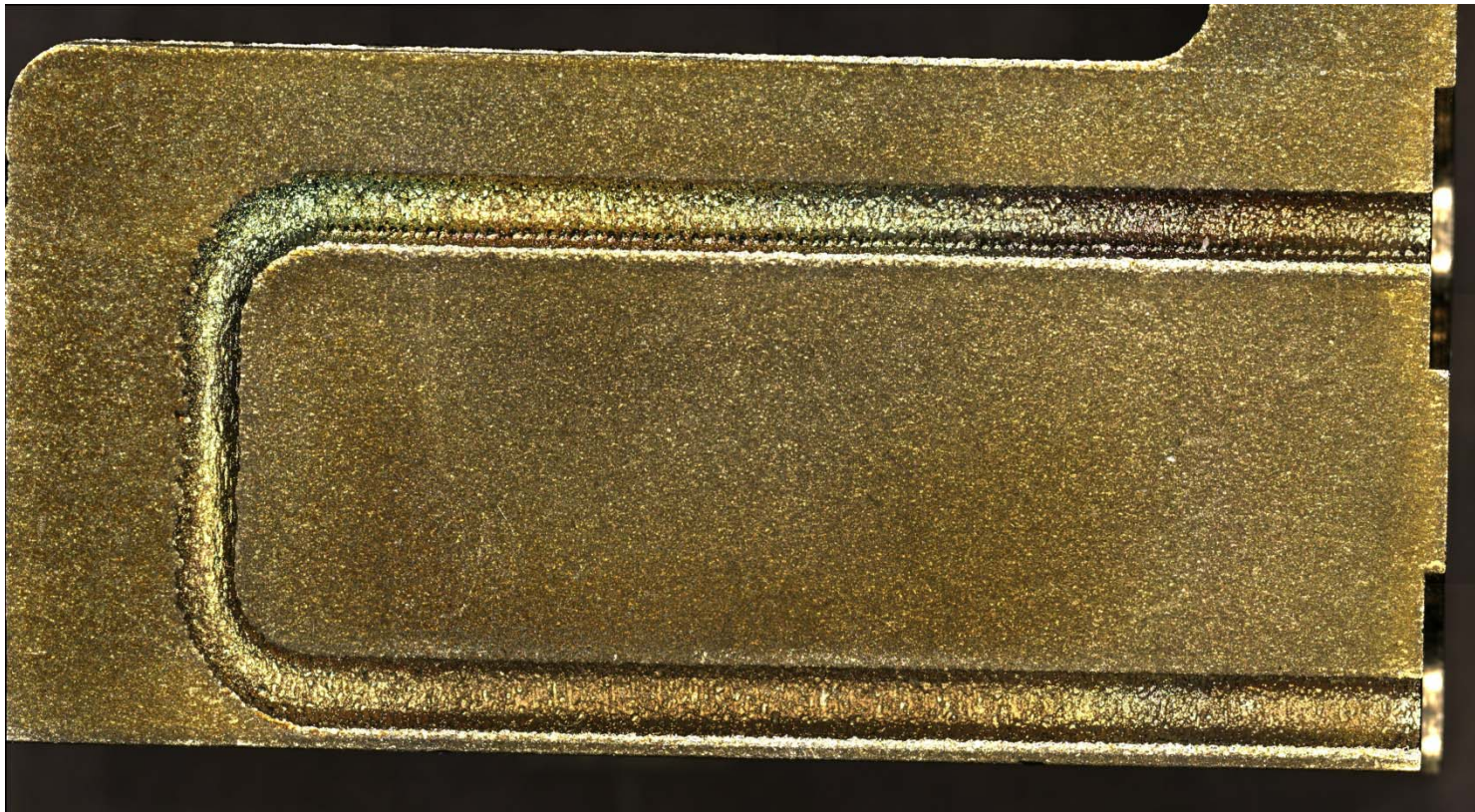
- Geometry of sample requires EDF
- Automatically replicate tools for each nest
- Use Stitching + EDF to visualize relevant areas

Metal Working

Failure Analysis: Inspect presence of inside coating.



- Best Image for optimal settings
- EDF: Extended Depth of Field, as sample is not flat
- Stitching to display the whole work piece (21MP image)



Injection Moulding

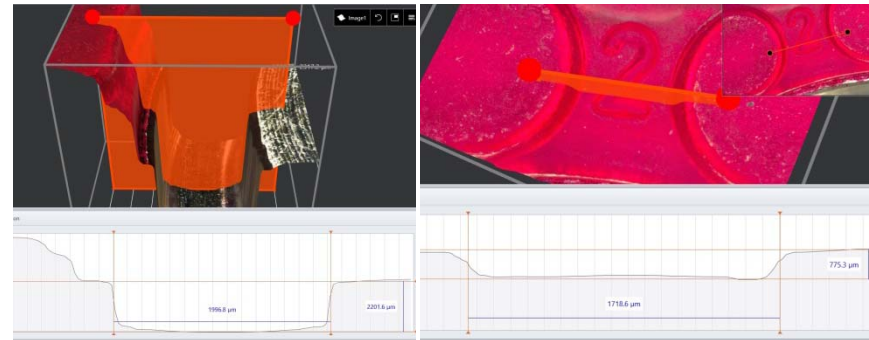
Random Inspection on piston moulding



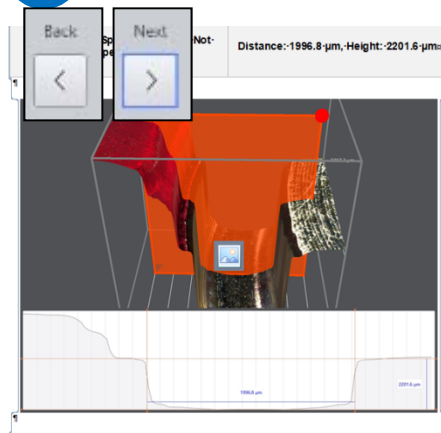
1 Pistons to be qualified



2 Define inspection plan



3 Run inspection plan



Smartzoom 5 Features



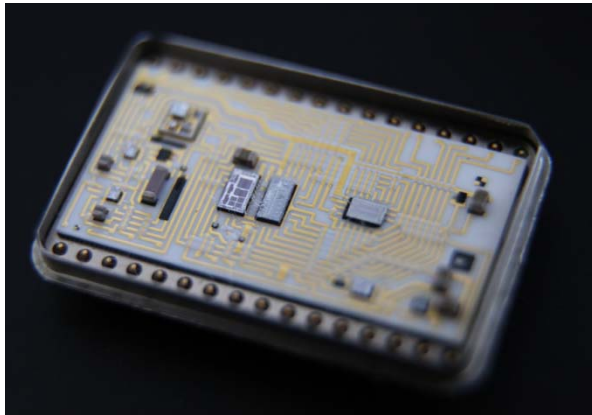
- Live HDR (High Dynamic Range) for reflective samples
- Inspection plan for automatic positioning and focussing
- Inspection plan for repeatable results

Electronics

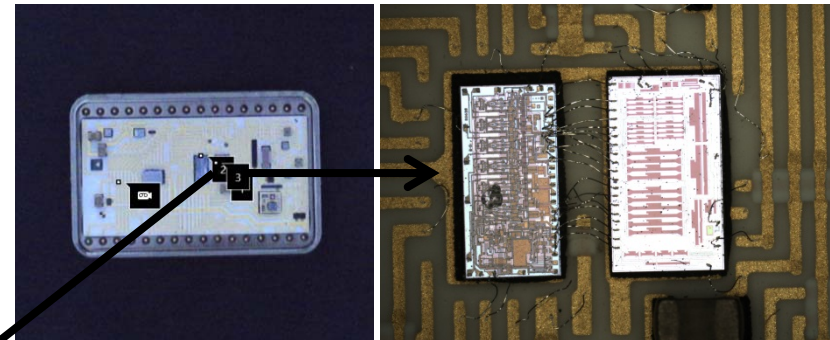
Failure Analysis. Find the root cause of a defective board.



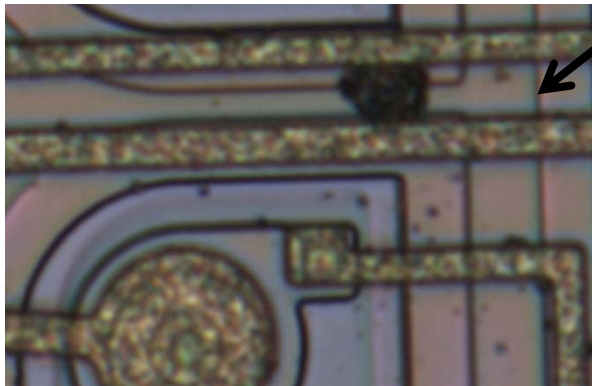
1 Work piece



2 Stitched image with 30x magnification



3 1011x magnification and HighRes Mode (18 MP)



Smartzoom 5 Features



- Overview image for navigation
- Use Stitching to inspect the whole sample
- Increase resolution with HighRes Mode

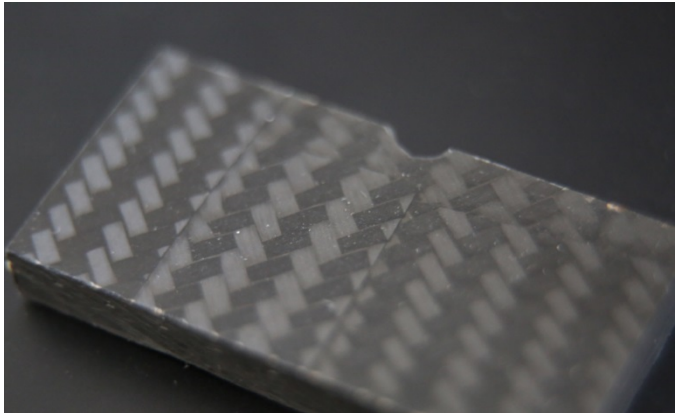
Carbon fiber

FH Rosenheim Failure Analysis. Defective carbon fiber–reinforced polymer thread.



1

Work piece



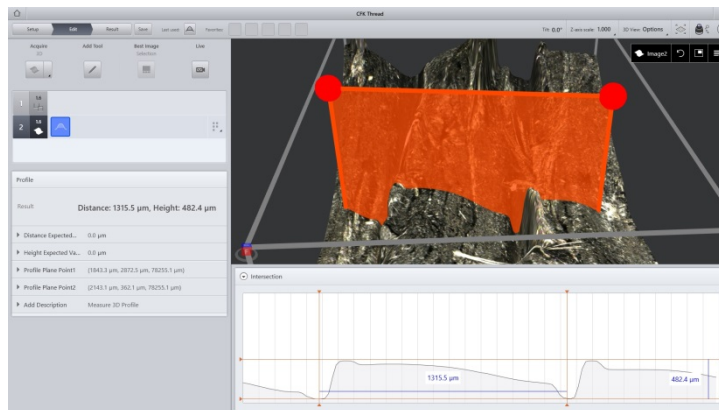
2

Stitched image. Detail view.



3

Chipped thread profile



Smartzoom 5 Features



- Overview image for navigation
- Fast identification of root cause

Dashboard Skin

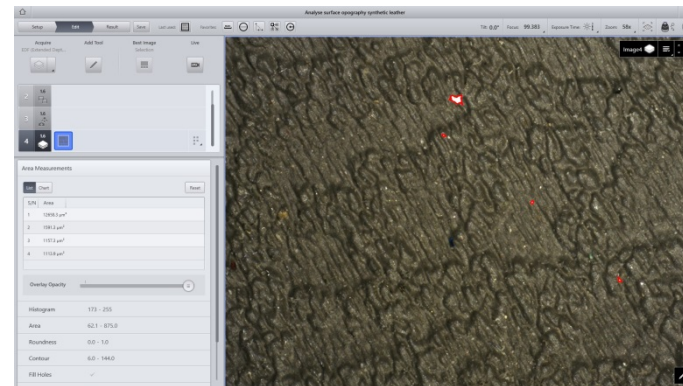
FH Rosenheim. Dashboard skin. Inspection of synthetic leather.



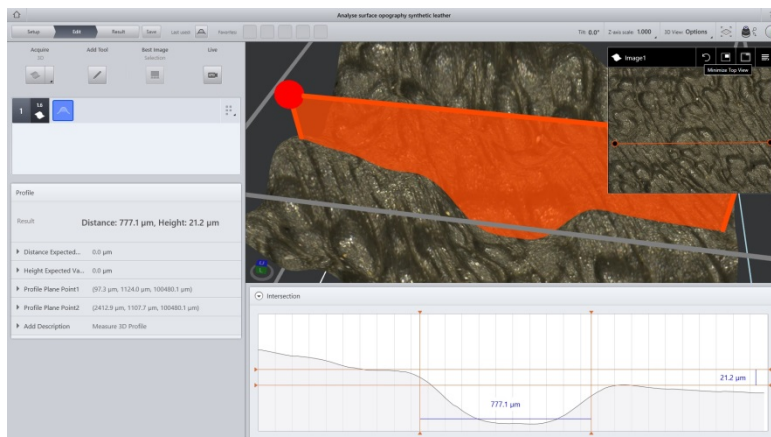
1 Cut of dashboard skin



2 Automatically determine defective areas



3 3D inspection of critical areas



Smartzoom 5 Features



- Easy navigation through overview image
- Automatic measurement of defective areas
- Detailed analysis of defective areas.

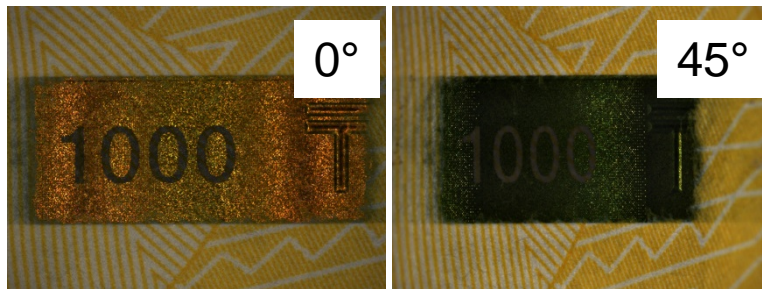
National Bank

Random inspection of banknotes during production



1

Security feature. Color changes according to angle. Tracable results through encoded tilting angle.



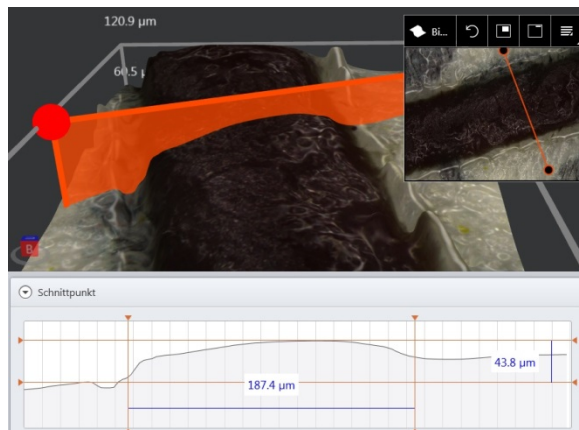
2

Feature recognition by repetitive objects tool



3

Relief of Intaglio printing



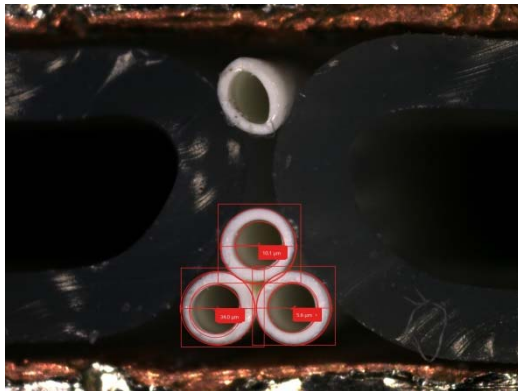
Smartzoom 5 Features



- Random quality inspection. Inspection plan ensures traceable results
- Automated feature recognition and replication of tools

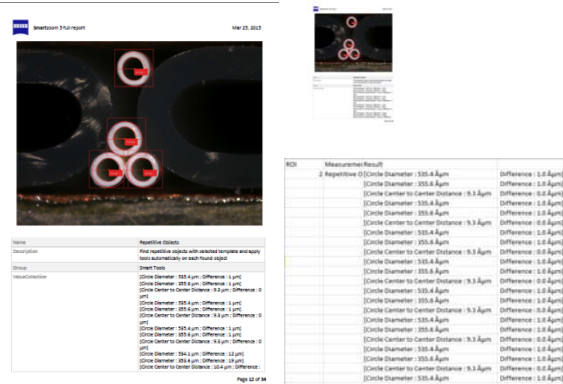
1

Detect filaments automatically, replicate measurements - if not crimped



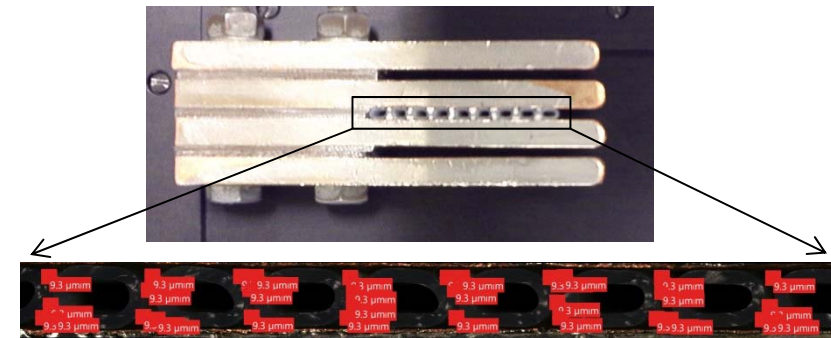
3

Easy Report generation
Word report, CSV Export



2

Navigate on overview image
Perform inspection on stitched image



Smartzoom 5 Features



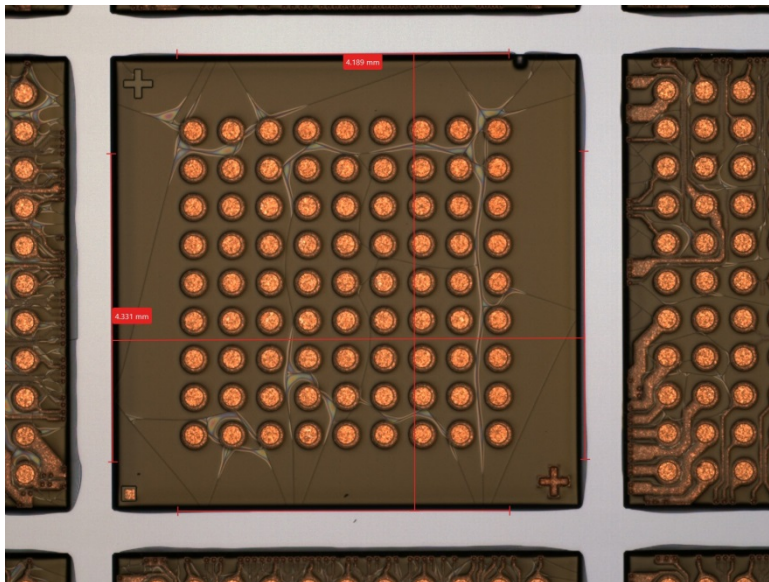
- Overview image enables fast navigation on work piece
- Automated feature recognition and replication of tools speeds up inspection
- False filaments are ignored

Quality Inspection of Wafers

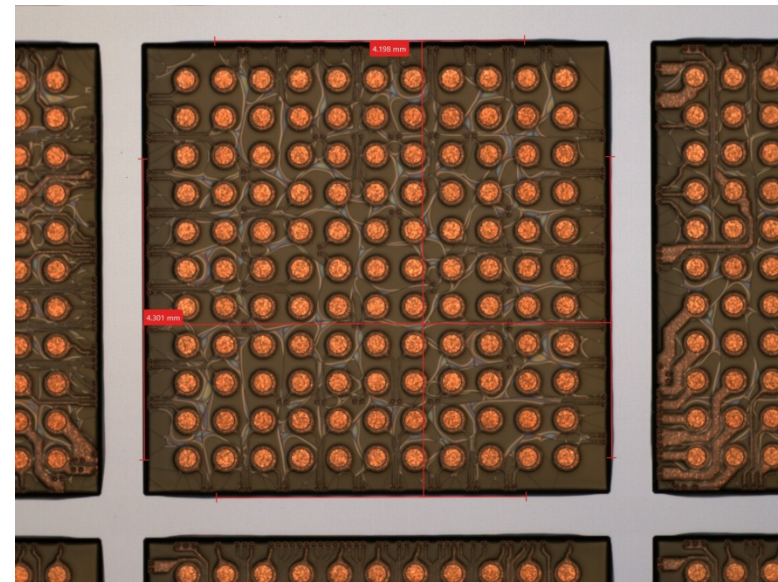
Stage travel range optimal for 4 Inch / 6 Inch Wafers



- 1 Excellent images through usage of ringlight and coaxial illumination simultaneously



- 2 Repetitive objects tool enables automatical detection of objects and replication of tools



Research

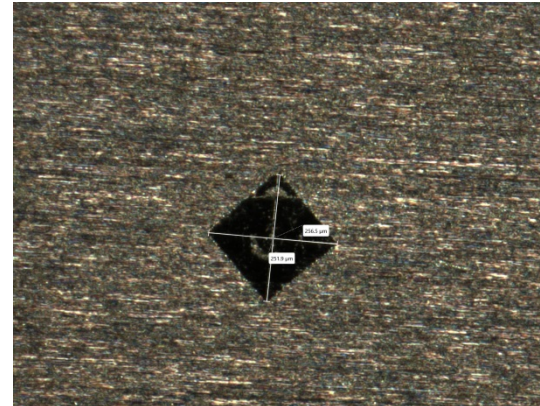
FH Aalen. Semi-automated Vickers imprint measurement.



1 Hardness imprint



2 Determine x/y distance for Vickers imprint



3 Create template and replicate the tools on each imprint on the work piece



Smartzoom 5 Features



- Easy navigation through overview image
- Automatic detection of imprints (not scaling invariant) and replication of tools for semi-automated failure analysis

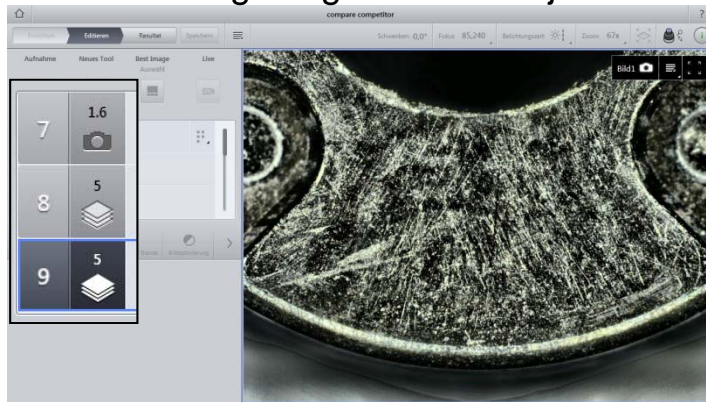
Analysis of competitor's work piece

Reliable and fast comparison



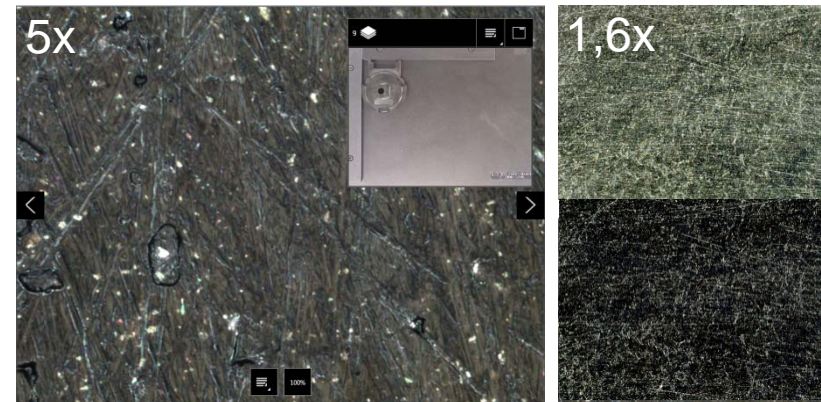
1

Teach inspection plan that contains examination of 9 relevant features, including images from 2 objective lenses



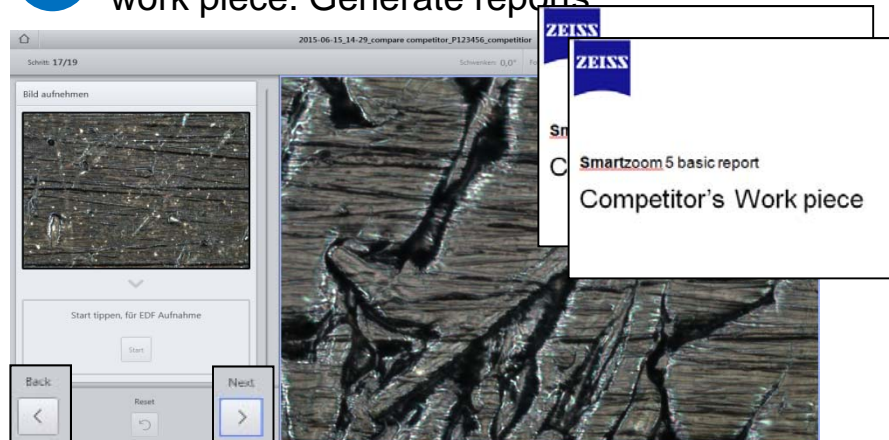
2

Perform surface characterization by using illumination combinations and filters



3

Run inspection plan on competitor's work piece. Generate reports



Smartzoom 5 Features

- Reliable surface inspection on critical areas, fast inspection through automation
- Comparable results, Reports of customer's and competitor's work piece

Automotive Supplier

EDF image for classification of failure mechanism without sample preparation.



Breaking edge of metallic work piece



Smartzoom 5 Features

- Easy navigation through overview image
- Seamless tilting function
- No sample preparation needed